

Worklist: 1726

<u>LAB_CASE</u>	<u>ITEM</u>	<u>TASK_ID</u>	<u>DESCRIPTION</u>	
M2017-0901	1	84722	AM 14 Blood Cannabinoids by	
M2017-1311	1	84723	AM 14 Blood Cannabinoids by	
P2017-0074	1	84733	AM 14 Blood Cannabinoids by	
P2017-0465	3	84724	AM 14 Blood Cannabinoids by	
P2017-0607	1	84725	AM 14 Blood Cannabinoids by	
P2017-0663	1	84726	AM 14 Blood Cannabinoids by	
P2017-0735	1	84727	AM 14 Blood Cannabinoids by	
P2017-0863	2	84728	AM 14 Blood Cannabinoids by	
P2017-0864	1	84729	AM 14 Blood Cannabinoids by	
P2017-0898	1	84730	AM 14 Blood Cannabinoids by	
P2017-0908	1	84731	AM 14 Blood Cannabinoids by	
P2017-0966	1	84732	AM 14 Blood Cannabinoids by	

Worklist Report

Worklist Path:	C:\MassHunter\ISP Methods\worklists\CS Combined 051217.wkl
Date Modified:	05/12/2017 03:12:34 PM
Date Printed:	05/12/2017 03:12:41 PM

Worklist Run Parameters

Operator Name:	62340
Run Type:	Standard Start
Part of Method to Run:	Acquisition Only
Execution for Acquisition-DA:	Synchronous
Acquisition Method Path:	C:\MassHunter\ISP Methods\Acquisition
DA Method Path:	D:\MassHunter\methods
Data File Path:	C:\MassHunter\Data\2016\Combined\092216MJ
Pre-Worklist Script:	---
Post-Worklist Script:	SCP_InstrumentStandby(){MH_Acq_Scripts.exe}
Acquisition Clean Up Script:	---
Overlapped Injection:	No
Clear sample selection after run:	Yes
Wait Time for Ready(Min):	10
Threshold Disk Value(GB):	10
Comment:	---

Plate Barcode Information


Plate	Barcode
P1	
P2	

Worklist Table

Sample Position	Sample Name	Method	Data File	Sample Type	Level Name	Comment	Info.
P1-A1	Blank	Benzos_Z_Drugs_ACN_FA_ISP_2017.m	BZ-Blank.d	Blank		AM 6.1.1 Benzo and Z by LCQQQ	Blood
P1-A1	Blank	Benzos_Z_Drugs_ACN_FA_ISP_2017.m	BZ-Blank1-r001.d	Blank		AM 6.1.1 Benzo and Z by LCQQQ	Blood
P1-A1	Blank	Benzos_Z_Drugs_ACN_FA_ISP_2017.m	BZ-Blank2-r001.d	Blank		AM 6.1.1 Benzo and Z by LCQQQ	Blood
P1-A2	10 ngmL	Benzos_Z_Drugs_ACN_FA_ISP_2017.m	BZ-10 ngmL-r001.d	Calibration	2	AM 6.1.1 Benzo and Z by LCQQQ	
P1-A3	25 ngmL	Benzos_Z_Drugs_ACN_FA_ISP_2017.m	BZ-25 ngmL_r001.d	Calibration	3	AM 6.1.1 Benzo and Z by LCQQQ	
P1-A4	50 ngmL	Benzos_Z_Drugs_ACN_FA_ISP_2017.m	BZ-50 ngmL_r001.d	Calibration	4	AM 6.1.1 Benzo and Z by LCQQQ	
P1-A5	100 ngmL	Benzos_Z_Drugs_ACN_FA_ISP_2017.m	BZ-100 ngmL_r001.d	Calibration	5	AM 6.1.1 Benzo and Z by LCQQQ	

Sample Position	Sample Name	Method	Data File	Sample Type	Level Name	Comment	Info. ٢
P1-A6	500 ngmL	Benzos_Z_Drugs_ACN_FA_ISP_2017.m	BZ-500 ngmL_r001.d	Calibration	6	AM 6.1.1 Benzo and Z by LCQQQ	
P1-A7	1000 ngmL	Benzos_Z_Drugs_ACN_FA_ISP_2017.m	BZ-1000 ngmL_r001.d	Calibration	7	AM 6.1.1 Benzo and Z by LCQQQ	
P1-A1	Blank	Benzos_Z_Drugs_ACN_FA_ISP_2017.m	BZ-Carryover blank1_r001.d	Blank		AM 6.1.1 Benzo and Z by LCQQQ	
P1-A8	Negative Blood Control	Benzos_Z_Drugs_ACN_FA_ISP_2017.m	BZ-NC-B_r001.d	Sample		AM 6.1.1 Benzo and Z by LCQQQ	UTAK Negative Whole Blood LOT B1013
P1-A9	Positive Blood Control	Benzos_Z_Drugs_ACN_FA_ISP_2017.m	BZ-PC-B-r001.d	Sample		AM 6.1.1 Benzo and Z by LCQQQ	Benzodiazepines Mix Cerilliant lot FE012413-02 in UTAK LOT B1013
P1-A1	Blank	Benzos_Z_Drugs_ACN_FA_ISP_2017.m	BZ-Carryover blank-C2016-1060-1_r001.d	Blank		AM 6.1.1 Benzo and Z by LCQQQ	
P1-B1	M2017-1119	Benzos_Z_Drugs_ACN_FA_ISP_2017.m	BZ-M119-r001.d	Sample		AM 6.1.1 Benzo and Z by LCQQQ	Blood
P1-B2	P2017-0413-8	Benzos_Z_Drugs_ACN_FA_ISP_2017.m	BZ-P0413-8_r001.d	Blank		AM 6.1.1 Benzo and Z by LCQQQ	
P1-B3	P2017-0465-3	Benzos_Z_Drugs_ACN_FA_ISP_2017.m	BZ-P0465-3-r001.d	Sample		AM 6.1.1 Benzo and Z by LCQQQ	Blood
P1-B4	P2017-0620	Benzos_Z_Drugs_ACN_FA_ISP_2017.m	BZ-P0620_r001.d	Blank		AM 6.1.1 Benzo and Z by LCQQQ	
P1-B5	P2017-0696	Benzos_Z_Drugs_ACN_FA_ISP_2017.m	BZ-P0696-r001.d	Sample		AM 6.1.1 Benzo and Z by LCQQQ	Blood
P1-B6	P2017-0881	Benzos_Z_Drugs_ACN_FA_ISP_2017.m	BZ-P0881_r001.d	Blank		AM 6.1.1 Benzo and Z by LCQQQ	
P1-A1	Blank	Benzos_Z_Drugs_ACN_FA_ISP_2017.m	BZ-blank.d	Blank		AM 6.1.2 Cannabinoids by LCQQQ	
P1-C1	Blank	isp blood cannabinoids Poky 2016-3.m	MJ-Blank1-r001.d	Blank		AM 6.1.2 Cannabinoids by LCQQQ	
P1-C1	Blank	isp blood cannabinoids Poky 2016-3.m	MJ-Blank2-r001.d	Blank		AM 6.1.2 Cannabinoids by LCQQQ	
P1-C2	Blood: 1_5 ngmL	isp blood cannabinoids Poky 2016-3.m	MJ-CAL1-r001.d	Calibration	1	AM 6.1.2 Cannabinoids by LCQQQ	c-THC @5ng/mL, all others @1 ng/mL
P1-C3	Blood: 2_10 ngmL	isp blood cannabinoids Poky 2016-3.m	MJ-CAL2_r001.d	Calibration	2	AM 6.1.2 Cannabinoids by LCQQQ	c-THC @10ng/mL, all others @2 ng/mL
P1-C4	Blood: 5_25 ngmL	isp blood cannabinoids Poky 2016-3.m	MJ-CAL3_r001.d	Calibration	3	AM 6.1.2 Cannabinoids by LCQQQ	c-THC @25ng/mL, all others @5 ng/mL
P1-C5		isp blood cannabinoids Poky 2016-3.m		Calibration	4		

Sample Position	Sample Name	Method	Data File	Sample Type	Level Name	Comment	Info. ☺
	Blood: 10_50 ng/mL		MJ-CAL4_r001.d			AM 6.1.2 Cannabinoids by LCQQQ	c-THC @50ng/mL, all others @10 ng/mL
P1-C6	Blood: 25_125 ng/mL	isp blood cannabinoids Poky 2016-3.m	MJ-CAL5_r001.d	Calibration	5	AM 6.1.2 Cannabinoids by LCQQQ	c-THC @125ng/mL, all others @25 ng/mL
P1-C7	Blood: 50_250 ng/mL	isp blood cannabinoids Poky 2016-3.m	MJ-CAL6_r001.d	Calibration	6	AM 6.1.2 Cannabinoids by LCQQQ	c-THC @250ng/mL, all others @50 ng/mL
P1-C8	Blood: 100_500 ng/mL	isp blood cannabinoids Poky 2016-3.m	MJ-CAL7_r001.d	Calibration	7	AM 6.1.2 Cannabinoids by LCQQQ	c-THC @500ng/mL, all others @100 ng/mL
P1-C1	Blank	isp blood cannabinoids Poky 2016-3.m	MJ-Carryover blank1_r001.d	Blank		AM 6.1.2 Cannabinoids by LCQQQ	
P1-C9	Blood Negative Control	isp blood cannabinoids Poky 2016-3.m	MJ-NC-r001.d	Sample		AM 6.1.2 Cannabinoids by LCQQQ	Negative Blood UTAK Lot B1013
P1-D1	PC1	isp blood cannabinoids Poky 2016-3.m	MJ-POS Ctrl 1-r001.d	Sample		AM 6.1.2 Cannabinoids by LCQQQ	Positive Control-UTAK B1013 + WS060716
P1-C1	Blank	isp blood cannabinoids Poky 2016-3.m	MJ-Blank 3_r001.d	Blank		AM 6.1.2 Cannabinoids by LCQQQ	
P1-D2	M2017-0901	isp blood cannabinoids Poky 2016-3.m	MJ-M0901-r001.d	Sample		AM 6.1.2 Cannabinoids by LCQQQ	Blood
P1-D3	M2017-1311	isp blood cannabinoids Poky 2016-3.m	MJ-M1311-r001.d	Blank		AM 6.1.2 Cannabinoids by LCQQQ	
P1-D4	P2017-0465-3	isp blood cannabinoids Poky 2016-3.m	MJ-P0465-3-r001.d	Sample		AM 6.1.2 Cannabinoids by LCQQQ	Blood
P1-D5	P2017-0607	isp blood cannabinoids Poky 2016-3.m	MJ-P0607_r001.d	Blank		AM 6.1.2 Cannabinoids by LCQQQ	
P1-D6	P2017-0663	isp blood cannabinoids Poky 2016-3.m	MJ-P0663-r001.d	Sample		AM 6.1.2 Cannabinoids by LCQQQ	Blood
P1-D7	P2017-0735	isp blood cannabinoids Poky 2016-3.m	MJ-P0735-r001.d	Blank		AM 6.1.2 Cannabinoids by LCQQQ	
P1-D8	PC2	isp blood cannabinoids Poky 2016-3.m	MJ-POS Ctrl 2-r001.d	Sample		AM 6.1.2 Cannabinoids by LCQQQ	Positive Control-UTAK B1013 + WS060716
P1-D9	P2017-0863-2	isp blood cannabinoids Poky 2016-3.m	MJ-P0863-2-r001.d	Sample		AM 6.1.2 Cannabinoids by LCQQQ	Blood
P1-E1	P2017-0864	isp blood cannabinoids Poky 2016-3.m	MJ-P0864-r001.d	Blank		AM 6.1.2 Cannabinoids by LCQQQ	
P1-E2	P2017-0898	isp blood cannabinoids Poky 2016-3.m	MJ-P0898-r001.d	Sample		AM 6.1.2 Cannabinoids by LCQQQ	Blood
P1-E3	P2017-0908	isp blood cannabinoids Poky 2016-3.m	MJ-P0908-r001.d	Blank			

Sample Position	Sample Name	Method	Data File	Sample Type	Level Name	Comment	Info. 
						AM 6.1.2 Cannabinoids by LCQQQ	
P1-E4	P2017-0074	isp blood cannabinoids Poky 2016-3.m	MJ-P0074_r001.d	Blank		AM 6.1.2 Cannabinoids by LCQQQ	
P1-E5	P2017-0966	isp blood cannabinoids Poky 2016-3.m	MJ-P0966-r001.d	Blank		AM 6.1.2 Cannabinoids by LCQQQ	
P1-C1	Blank	isp blood cannabinoids Poky 2016-3.m	MJ-Blank4-r001.d	Blank		AM 6.1.2 Cannabinoids by LCQQQ	Blood

ISP Forensics Calibration Curve Report

Batch Data Path C:\MassHunter\Data\2017\Combined\051217 CS\QuantResults\051817 CS CANN.batch.bin

Last Calib Update 5/18/2017 8:46 AM

Analyst Name

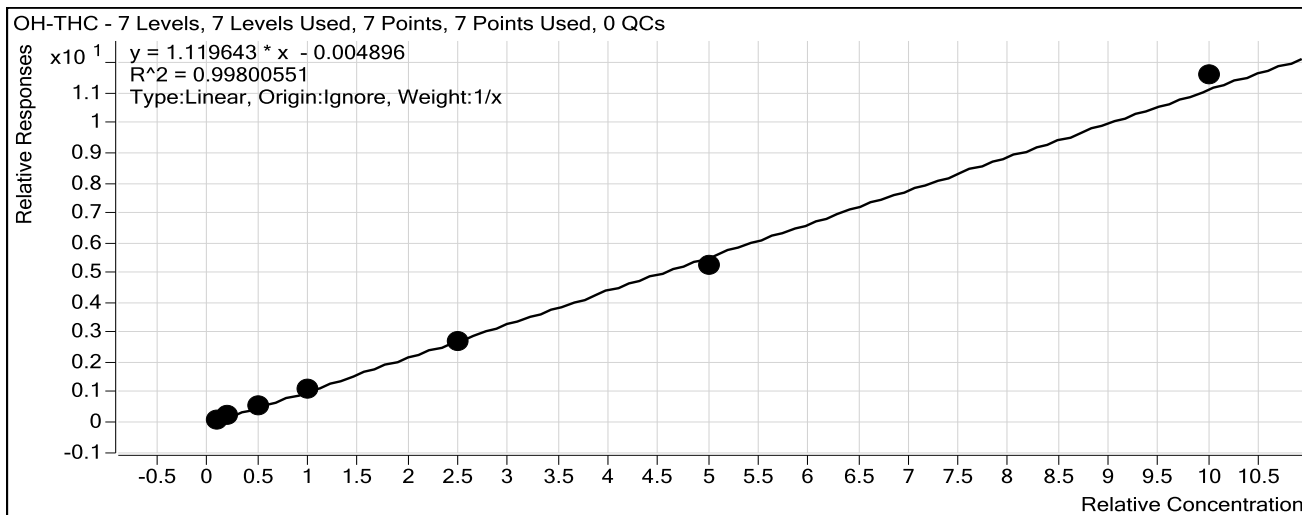
ISP TOX

Target Compound *OH-THC*

OH-THC-d3

Internal Standard

OH-THC-d3



Sample	Level	Enabled	Exp Conc	Final Conc	Accuracy
Blood: 1_5 ng/mL	1	<input checked="" type="checkbox"/>	1	1.1	109.1
Blood: 2_10 ng/mL	2	<input checked="" type="checkbox"/>	2	2.0	98.0
Blood: 5_25 ng/mL	3	<input checked="" type="checkbox"/>	5	4.8	96.4
Blood: 10_50 ng/mL	4	<input checked="" type="checkbox"/>	10	10.1	101.1
Blood: 25_125 ng/mL	5	<input checked="" type="checkbox"/>	25	24.4	97.7
Blood: 50_250 ng/mL	6	<input checked="" type="checkbox"/>	50	47.0	94.1
Blood: 100_500 ng/mL	7	<input checked="" type="checkbox"/>	100	103.6	103.6

ISP Forensics Calibration Curve Report

CS

Batch Data Path C:\MassHunter\Data\2017\Combined\051217 CS\QuantResults\051817 CS CANN.batch.bin

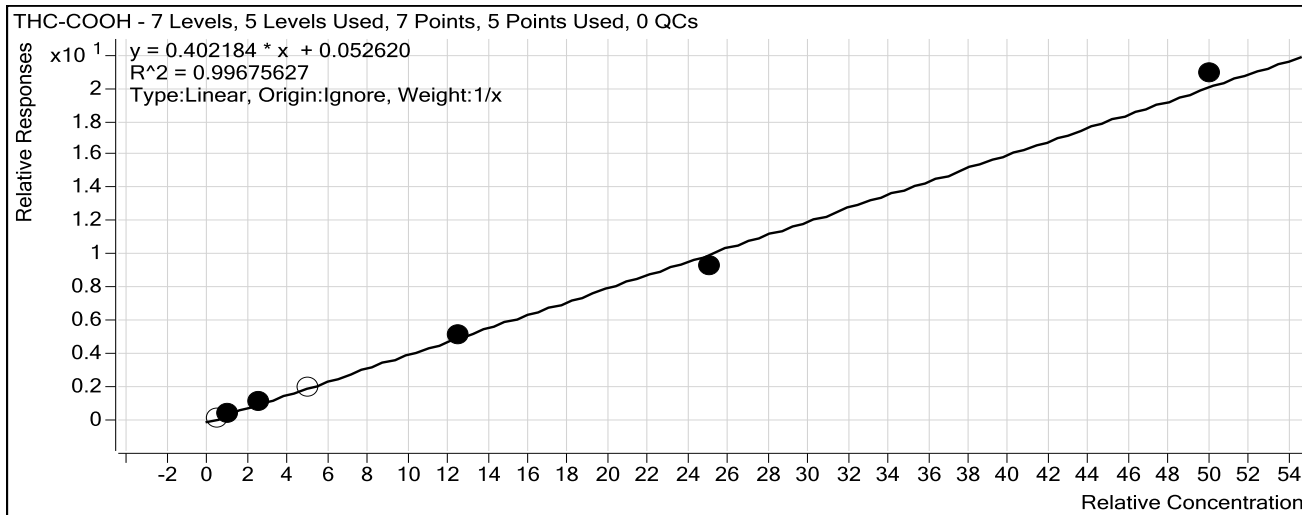
Last Calib Update 5/18/2017 8:46 AM

Analyst Name

ISP TOX

Target Compound *THC-COOH*

Internal Standard *THC-COOH-d3*



Sample	Level	Enabled	Exp Conc	Final Conc	Accuracy
Blood: 1_5 ng/mL	1	<input type="checkbox"/>	5	3.9	78.2
Blood: 2_10 ng/mL	2	<input checked="" type="checkbox"/>	10	10.1	100.6
Blood: 5_25 ng/mL	3	<input checked="" type="checkbox"/>	25	25.6	102.5
Blood: 10_50 ng/mL	4	<input type="checkbox"/>	50	50.1	100.2
Blood: 25_125 ng/mL	5	<input checked="" type="checkbox"/>	125	127.1	101.7
Blood: 50_250 ng/mL	6	<input checked="" type="checkbox"/>	250	229.2	91.7
Blood: 100_500 ng/mL	7	<input checked="" type="checkbox"/>	500	518.0	103.6

ISP Forensics Calibration Curve Report

CS

Batch Data Path C:\MassHunter\Data\2017\Combined\051217 CS\QuantResults\051817 CS CANN.batch.bin

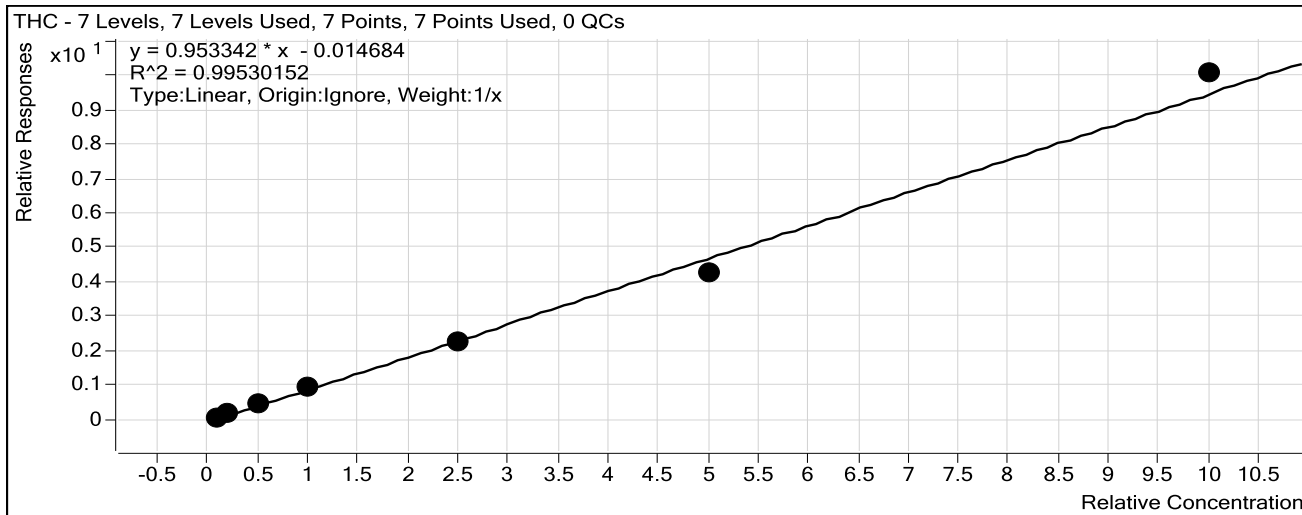
Last Calib Update 5/18/2017 8:46 AM

Analyst Name

ISP TOX

Target Compound *THC*

Internal Standard *THC-d3*



Sample	Level	Enabled	Exp Conc	Final Conc	Accuracy
Blood: 1_5 ng/mL	1	<input checked="" type="checkbox"/>	1	1.1	110.9
Blood: 2_10 ng/mL	2	<input checked="" type="checkbox"/>	2	2.0	97.9
Blood: 5_25 ng/mL	3	<input checked="" type="checkbox"/>	5	4.9	98.1
Blood: 10_50 ng/mL	4	<input checked="" type="checkbox"/>	10	10.0	100.2
Blood: 25_125 ng/mL	5	<input checked="" type="checkbox"/>	25	24.2	96.8
Blood: 50_250 ng/mL	6	<input checked="" type="checkbox"/>	50	45.3	90.6
Blood: 100_500 ng/mL	7	<input checked="" type="checkbox"/>	100	105.5	105.5

9

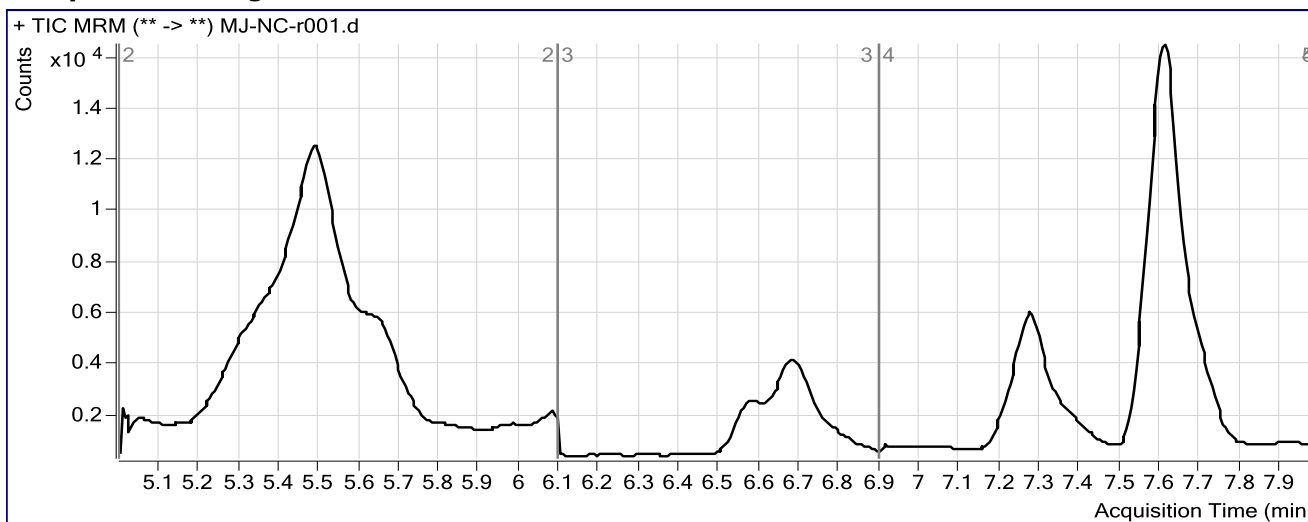
ISP FORENSICS Pocatello Cannabinoid Analysis Report

Batch Data Path C:\MassHunter\Data\2017\Combined\051217 CS\QuantResults\051817 CS CANN.batch.bin
Analysis Time 5/18/2017 8:46 AM **Analyst Name** ISPUser
Report Time 5/18/2017 8:49 AM **Reporter Name** ISPUser
Last Calib Update 5/18/2017 8:46 AM **Batch State** Processed

Analysis Info

Acq Time 2017-05-12 22:49 **Data File** MJ-NC-r001.d
Sample Type Sample **Sample Name** Blood Negative Control
Dilution 1 **Acq Method** isp blood cannabinoids Poky 2016-3.m
Position P1-C9 **Sample Info** Negative Blood UTAK Lot B1013
Inj Vol -1 **Comment** AM 6.1.2 Cannabinoids by LCQQQ

Sample Chromatogram



Results

Compound	ISTD Compound	RT	Response	ISTD Resp	Resp Ratio	Final Conc
OH-THC	OH-THC-d3	5.359	2053	92973	0.0221	0.2409

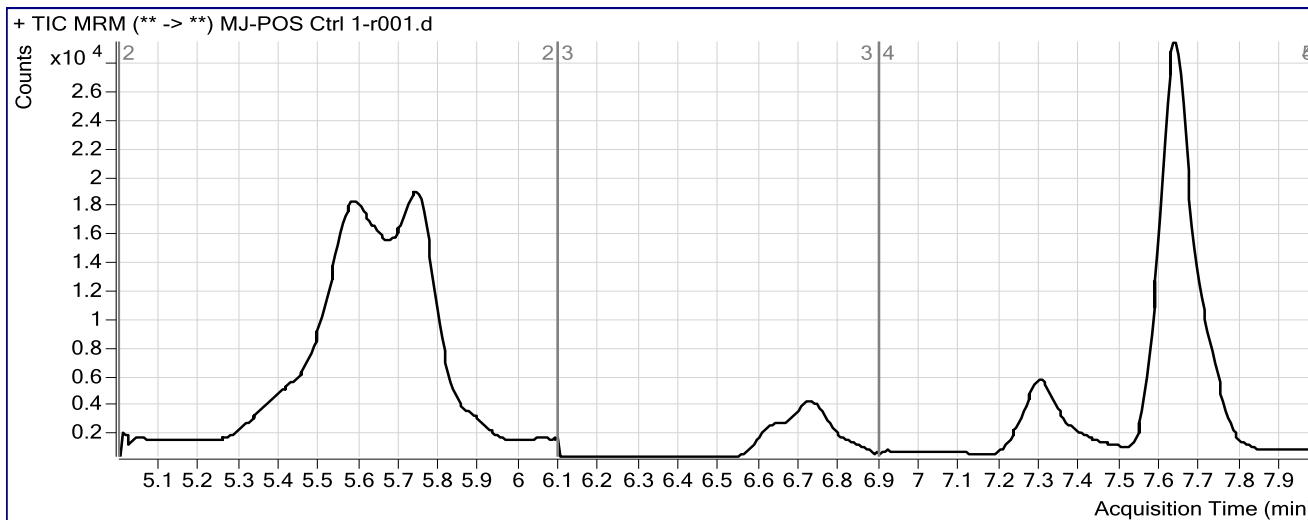
ISP FORENSICS Pocatello Cannabinoid Analysis Report

Batch Data Path C:\MassHunter\Data\2017\Combined\051217 CS\QuantResults\051817 CS CANN.batch.bin
Analysis Time 5/18/2017 8:46 AM **Analyst Name** ISPUser
Report Time 5/18/2017 8:49 AM **Reporter Name** ISPUser
Last Calib Update 5/18/2017 8:46 AM **Batch State** Processed

Analysis Info

Acq Time 2017-05-12 23:02 **Data File** MJ-POS Ctrl 1-r001.d
Sample Type Sample **Sample Name** PC1
Dilution 1 **Acq Method** isp blood cannabinoids Poky 2016-3.m
Position P1-D1 **Sample Info** Positive Control- UTAK B1013 + WS060716
Inj Vol -1 **Comment** AM 6.1.2 Cannabinoids by LCQQQ

Sample Chromatogram



Results

Compound	ISTD Compound	RT	Response	ISTD Resp	Resp Ratio	Final Conc
OH-THC	OH-THC-d3	5.550	837	81873	0.0102	0.1351
THC-COOH	THC-COOH-d3	5.743	26556	17552	1.5130	36.3104
THC	THC-d3	7.636	34833	43423	0.8022	8.5684

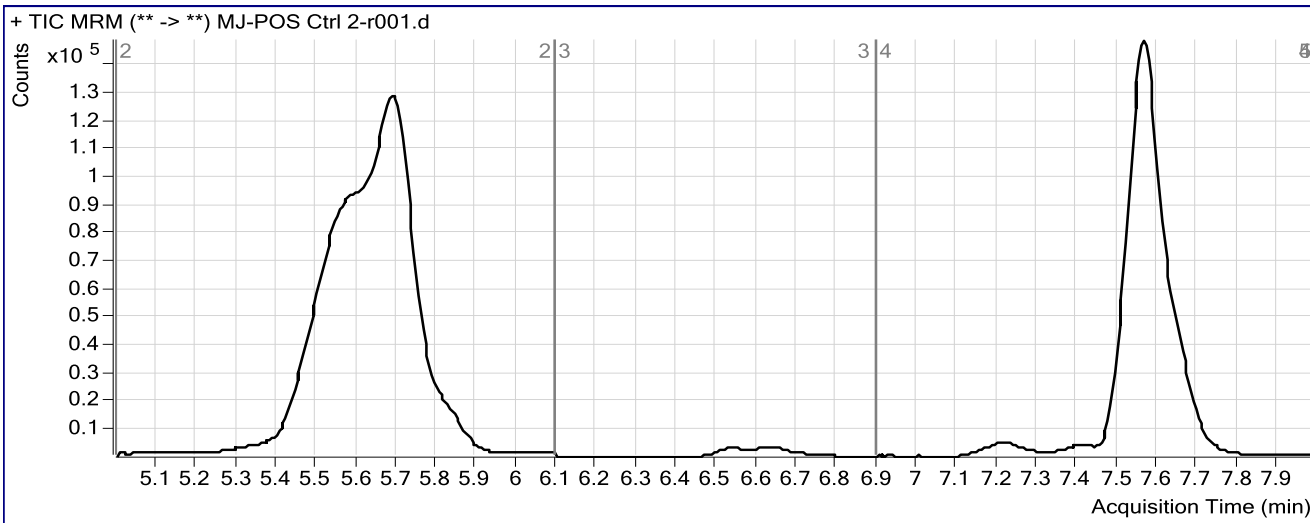
ISP FORENSICS Pocatello Cannabinoid Analysis Report

Batch Data Path C:\MassHunter\Data\2017\Combined\051217 CS\QuantResults\051817 CS CANN.batch.bin
Analysis Time 5/18/2017 8:46 AM **Analyst Name** ISPUser
Report Time 5/18/2017 8:50 AM **Reporter Name** ISPUser
Last Calib Update 5/18/2017 8:46 AM **Batch State** Processed

Analysis Info

Acq Time 2017-05-13 00:49 **Data File** MJ-POS Ctrl 2-r001.d
Sample Type Sample **Sample Name** PC2
Dilution 1 **Acq Method** isp blood cannabinoids Poky 2016-3.m
Position P1-D8 **Sample Info** Positive Control- UTAK B1013 + WS060716
Inj Vol -1 **Comment** AM 6.1.2 Cannabinoids by LCQQQ

Sample Chromatogram



Results

Compound	ISTD Compound	RT	Response	ISTD Resp	Resp Ratio	Final Conc
OH-THC	OH-THC-d3	5.398	1699	73189	0.0232	0.2511
THC-COOH	THC-COOH-d3	5.687	262359	15712	16.6983	413.8822
THC	THC-d3	7.563	368156	40921	8.9967	94.5238